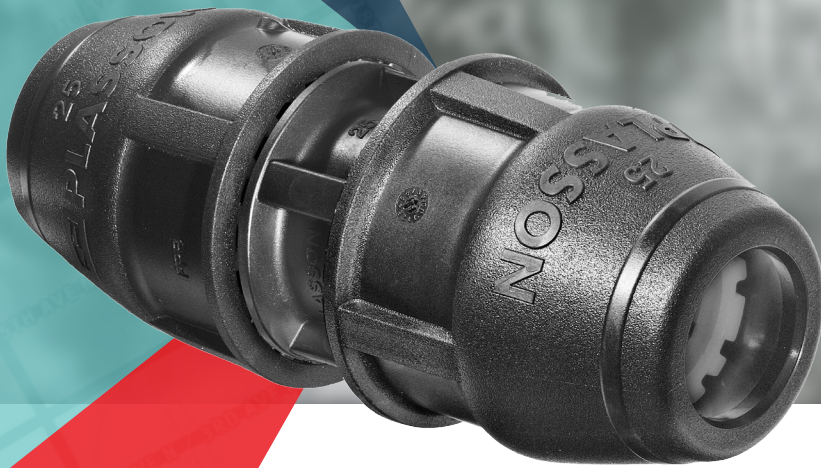


UNIVERSAL SLIP REPAIR COUPLING



When you need a rock-solid repair solution for any pipe,
Plasson USA's Universal Slip Repair Coupling is your best bet.



INDUSTRIAL



MINING



LANDFILL



*Also fits inside diameter controlled pipes, sizes 1/2" – 2" SDR9-11.5

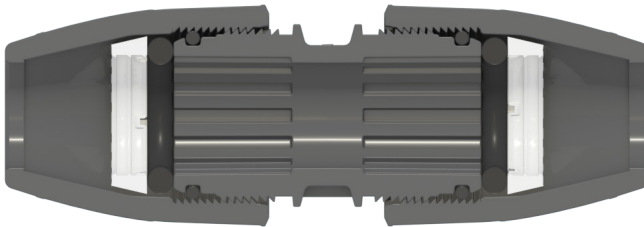
SIZE	PIPE DIAMETER RANGE	SUITABLE FOR PIPES
3/4" (25mm)	0.94"-1.10"	3/4" ips, 1" cts
1" (32mm)	1.22"-1.37"	1" ips, 1 1/4" cts
1 1/4" (40mm)	1.57"-1.69"	1 1/4" ips, 1 1/2" cts
1 1/2" (50mm)	1.89"-2.00"	1 1/2" ips
2" (63mm)	2.36"-2.52"	2" ips

Our innovative, one-of-a-kind coupling is designed, tested and quality controlled in accordance with Plasson's internal standards, manufactured in accordance to standard ASTM D3035, ASTM F714 and AWWA C906.

This Universal Slip Repair couplings:

- Double O-ring Seal
- Repair ID or OD Controlled Pipes SDR9-11.5
- Works on all Pipe Types (PE, Lead, Copper, PVC, PB, Galvanized)
- Available in sizes 3/4" – 2"
- Fitting is rated to a working pressure of 200psi

DOUBLE SEAL DESIGN



SPLIT RING WITH METAL TEETH

*Can be supplied without metal teeth, for PE pipe only

